

ACO product catalogue

ACO GRP Light Oil Separators

ACO Oleopator-G



**ACO. The future
of drainage.**



Glass Fibre Light Oil Separators Oleopator-G



collect:
Collect and
remove



clean:
Pre-clean and
process



hold:
Protect and
attenuate



release:
Pump, discharge and
reuse



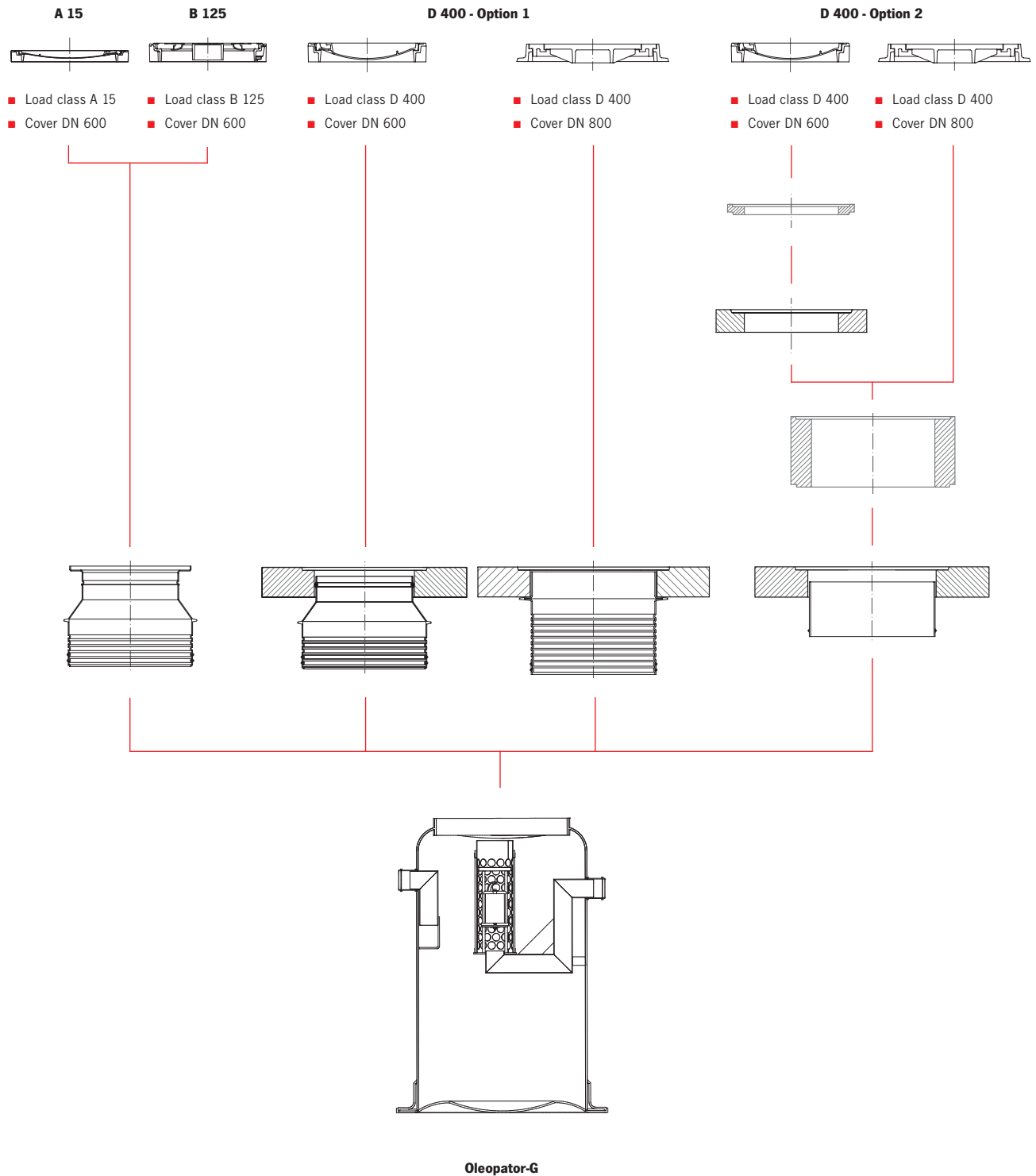
ACO system chain
in action

CONTENT

| | |
|--|-----------|
| Assembly concept | 4 |
| <hr/> | |
| Oleopator-G | 6 |
| <hr/> | |
| Top sections for Light oil separators | 8 |
| <hr/> | |
| Concrete shaft components | 10 |
| <hr/> | |

Assembly concept

Assembly parts



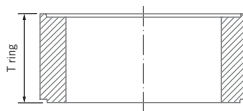
Total height of the access opening of DN 600 shall be max. 600 mm and DN 800 max. 3000 mm (according EN 476). All deeper installation on request.

Adjustable rings DN 600 and DN 800

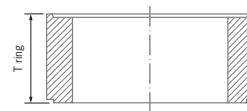
DN 600 - Top section 5



DN 800 - Top section 5



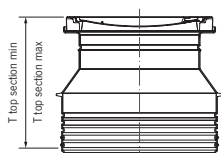
DN 800 - Top section 6



Top sections

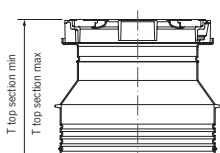
A 15

Top section 1



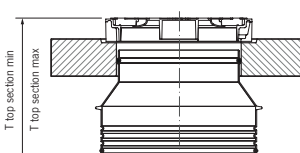
B 125

Top section 2

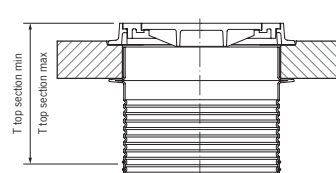


D 400 - Option 1

Top section 3

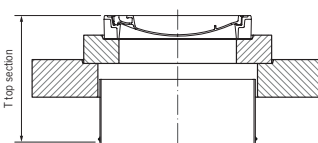


Top section 4

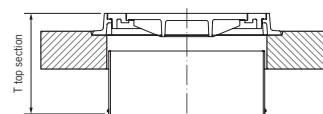


D 400 - Option 2

Top section 5



Top section 6



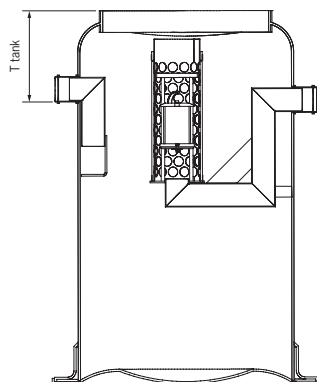
- Load class A 15
- Cover DN 600
- Only for Oleopator-G NS 3-30

- Load class B 125
- Cover DN 600
- Only for Oleopator-G NS 3-30

- Load class D 400
- Cover DN 600
- Only for Oleopator-G NS 3-30

- Load class D 400
- Cover DN 800
- Only for Oleopator-G NS 40-50

Bottom part



Oleopator-G

Calculation of Installation depth

Top section 1, 2, 3 and 4

- $T_{total} = T_{tank} + T_{top\ section} (min - max)$

Top section 5 and 6

- $T_{total} = T_{tank} + T_{top\ section} + T_{rings}$
- $T_{rings} \leq 3\ 000\ mm$
- $T_{rings\ DN\ 600} \leq 400\ mm$

Oleopator-G-FST NS 3 – 50 with Sludge trap

Product information

ACO Product benefits

- All nominal sizes tested by regional test institute (LGA)
- DOP
- Optimum accessibility guaranteed for maintenance, cleaning and disposal thanks to removable cage component
- Coalescence insert can be removed for cleaning without having to empty the separator
- Integrated connection for sampling device

- Tank made of glass reinforced plastic
- With coalescence insert (filter)
- Inner parts made of PEHD



Order information

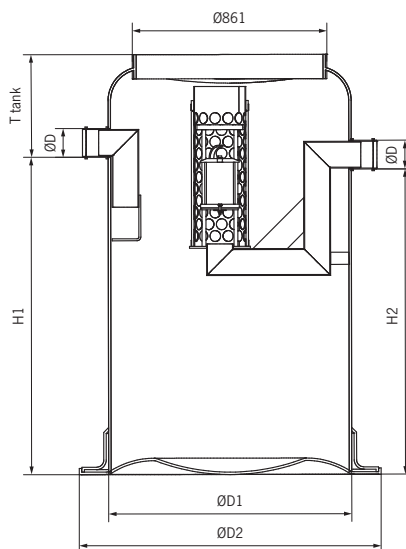
| Nominal size | Inlet/outlet DN/OD [mm] | Contents | | | Weight [kg] | Item number |
|--------------|-------------------------------|--------------------|-----------------|----------------|----------------|----------------|
| | | Sludge trap [l] | Oil tank [l] | Overall [l] | | |
| 3 | 100 | 300 | 163 | 620 | 105 | 12601.01 |
| 3 | 100 | 600 | 163 | 860 | 105 | 12602.01 |
| 3 | 100 | 900 | 232 | 1350 | 172 | 12603.01 |
| 6 | 150 | 600 | 160 | 880 | 169 | 12611.01 |
| 6 | 150 | 1200 | 232 | 1550 | 182 | 12612.01 |
| 6 | 150 | 1800 | 576 | 2010 | 233 | 12613.01 |
| 10 | 150 | 1000 | 273 | 1480 | 197 | 12621.01 |
| 10 | 150 | 2000 | 576 | 2720 | 254 | 12622.01 |
| 10 | 150 | 3000 | 1139 | 4410 | 705 | 12623.01 |
| 15 | 200 | 1500 | 464 | 2660 | 310 | 12631.01 |
| 15 | 200 | 3000 | 944 | 4540 | 525 | 12632.01 |
| 20 | 200 | 2000 | 1163 | 3560 | 505 | 12645.01 |
| 20 | 200 | 4000 | 1163 | 5560 | 565 | 12642.01 |
| 30 | 250 | 3000 | 1513 | 5470 | 515 | 12651.01 |
| 40 | 300 | 4000 | 1350 | 6940 | 630 | 12661.01 |
| 50 | 300 | 5000 | 1350 | 7930 | 650 | 12671.01 |



Light oil separators made of glass reinforced plastic

Oleopator-G-FST NS 3 - 50 with sludge trap

Dimensions



| Nominal size | Item number | H1 | H2 | ØD1 | ØD2 | T tank |
|--------------|-------------|------|------|------|------|--------|
| | | [mm] | [mm] | [mm] | [mm] | [mm] |
| 3 | 12601.01 | 800 | 780 | 1000 | 1240 | 400 |
| 3 | 12602.01 | 1260 | 1160 | 1000 | 1240 | 320 |
| 3 | 12603.01 | 1200 | 1180 | 1200 | 1360 | 460 |
| 6 | 12611.01 | 1160 | 1140 | 1000 | 1240 | 460 |
| 6 | 12612.01 | 1470 | 1450 | 1200 | 1360 | 570 |
| 6 | 12613.01 | 1230 | 1210 | 1500 | 1720 | 630 |
| 10 | 12621.01 | 1410 | 1390 | 1200 | 1360 | 590 |
| 10 | 12622.01 | 1620 | 1600 | 1500 | 1720 | 560 |
| 10 | 12623.01 | 1680 | 1660 | 2200 | 2440 | 580 |
| 15 | 12631.01 | 1380 | 1360 | 1500 | 1720 | 660 |
| 15 | 12632.01 | 2200 | 2180 | 1500 | 1720 | 660 |
| 20 | 12645.01 | 1880 | 1860 | 1500 | 1720 | 660 |
| 20 | 12642.01 | 1660 | 1640 | 2200 | 2440 | 780 |
| 30 | 12651.01 | 1620 | 1600 | 2200 | 2440 | 730 |
| 40 | 12661.01 | 2020 | 2000 | 2200 | 2440 | 970 |
| 50 | 12671.01 | 2280 | 2260 | 2200 | 2440 | 960 |

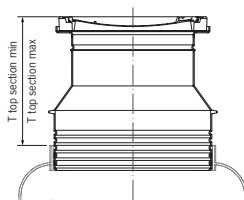
Top sections for Light oil separators

Top section 1 - load class A 15

Order information

ACO Product benefits

- Load class A 15 according to EN 124
- Frame from concrete, cover from cast iron
- Clear opening Ø 600 mm
- Raising tube from polyethylene



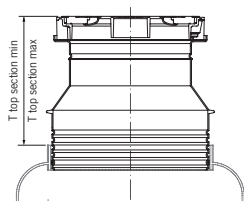
| T top section (min-max)* [mm] | Manhole cover [mm] | Weight [kg] | Item number |
|----------------------------------|-----------------------|----------------|-------------|
| 620-738 | Ø 600 | 94 | 3301.34.01 |
| 738-1188 | Ø 600 | 103 | 3301.34.02 |
| 188-1788 | Ø 600 | 113 | 3301.34.03 |

Top section 2 - load class B 125

Order information

ACO Product benefits

- Load class B 125 according to EN 124
- BEGU cover
- Clear opening Ø 600 mm
- Raising tube from polyethylene



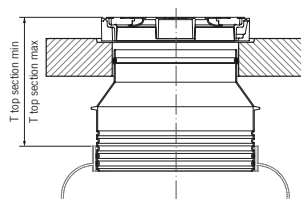
| T top section (min-max)* [mm] | Manhole cover [mm] | Weight [kg] | Item number |
|----------------------------------|-----------------------|----------------|-------------|
| 653-773 | Ø 600 | 80 | 3301.35.01 |
| 773-1223 | Ø 600 | 88 | 3301.35.02 |
| 1223-1823 | Ø 600 | 99 | 3301.35.03 |

Top section 3 - load class D 400 (Option 1)

Order information

ACO Product benefits

- Load class B 125 according to EN 124
- BEGU cover
- Clear opening Ø 600 mm
- Raising tube from polyethylene



| T top section (min-max)* [mm] | Manhole cover [mm] | Weight [kg] | Item number |
|--|-----------------------|----------------|-------------|
| 600-1720 (without load distribution plate) | Ø 600 | 104 | 3301.37.00 |
| 600-1720 (with load distribution plate) | Ø 600 | 824 | 3301.36.00 |

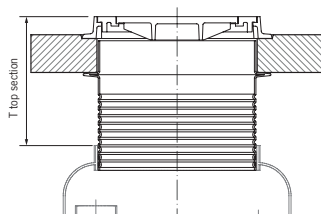
Note*: T tank + T top section (min-max) = T total

Top section 4 - load class D 400 (Option 1)

Order information

ACO Product benefits

- Load class D 400 according to EN 124
- Cover from cast iron
- Clear opening Ø 800 mm
- Raising tube from polyethylene



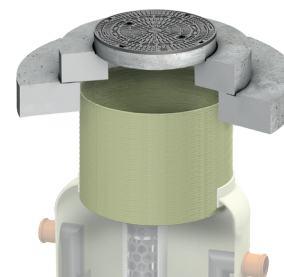
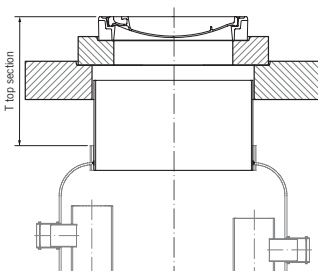
| T top section [mm] (min)** | Manhole cover [mm] | Weight [kg] | Item number |
|--|--------------------|-------------|-------------|
| 600-1720 (without load distribution plate) | Ø 800 | 272 | 418905 |
| 600-1720 (with load distribution plate) | Ø 800 | 991 | 418906 |

Top section 5 - load class D 400 (Option 2)

Order information

ACO Product benefits

- Load class D 400 according to EN 124
- BEGU cover
- Clear opening Ø 600 mm
- Selectively with load distribution plate from concrete
- Ø 1500 mm x 200 mm



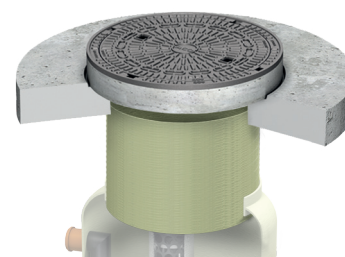
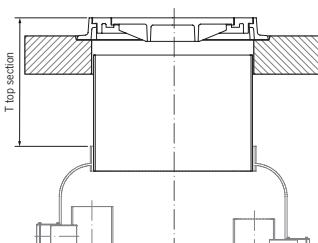
| T top section [mm] (min)** | Manhole cover [mm] | Weight [kg] | Item number |
|----------------------------|--------------------|-------------|-------------|
| 735 | Ø 600 | 434 | 418909 |

Top section 6 - load class D 400 (Option 2)

Order information

ACO Product benefits

- Load class D 400 according to EN 124
- Cover from cast iron
- Clear opening Ø 800 mm
- Selectively with load distribution plate from concrete
- Ø 1500 mm x 200 mm



| T top section [mm] (min)** | Manhole cover [mm] | Weight [kg] | Item number |
|----------------------------|--------------------|-------------|-------------|
| 595 | Ø 800 | 482 | 418910 |

Concrete shaft components

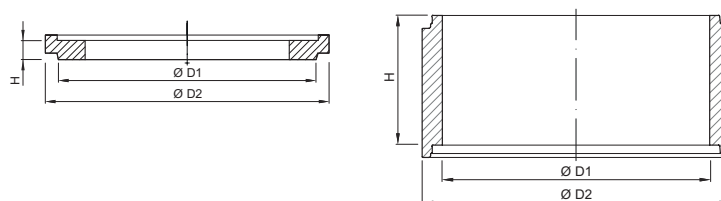
Product information

- To increase and equalise shaft height



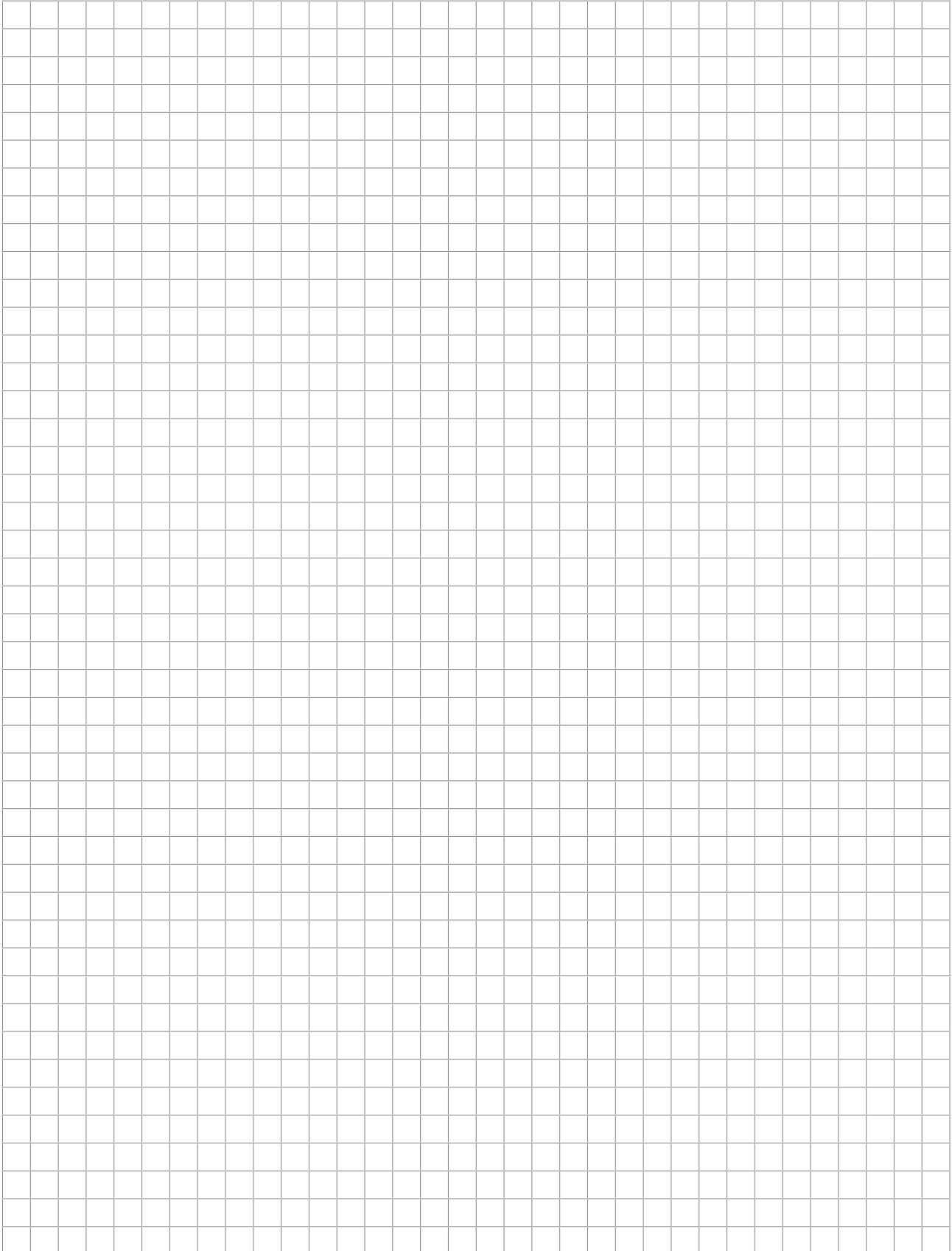
Adjustable rings as defined by DIN 4034 Part 1.

Order information



| Type | Dimension | | | Total height including mortar joints [mm] | Weight [kg] | Item number |
|-----------|-----------|---------------------|---------------------|---|-------------|-------------|
| | H [mm] | D ₁ [mm] | D ₂ [mm] | | | |
| 625 x 60 | 60 | 625 | 865 | 70 | 39 | 742011 |
| 625 x 80 | 80 | 625 | 865 | 90 | 51 | 742012 |
| 625 x 100 | 100 | 625 | 865 | 110 | 64 | 742013 |
| 625 x 120 | 120 | 625 | 865 | 130 | 80 | 742014 |
| 625 x 150 | 150 | 625 | 865 | 160 | 96 | 742070 |
| 800 x100 | 100 | 800 | 1040 | 110 | 98 | 742006 |
| 800 x 150 | 150 | 800 | 1040 | 160 | 147 | 742007 |
| 800 x 200 | 200 | 800 | 1040 | 210 | 196 | 742008 |
| 800 x 400 | 400 | 800 | 1040 | 410 | 392 | 742009 |
| 800 x 500 | 500 | 800 | 1040 | 510 | 490 | 742074 |

Notes



ACO Industries Tábor s.r.o.

Prumyslova 1158
391 01 Sezimovo Usti
Czech Republic

www.aco.com

ACO. The future of drainage.

All reasonable care has been taken in compiling the information in this document. All recommendations and suggestions on the use of ACO products are made without guarantee since the conditions of use are beyond the control of the Company. It is the customer's responsibility to ensure that each product is fit for its intended purpose and that the actual conditions of use are suitable. This brochure and any advice is provided free of charge and accordingly on terms that no liability (including liability for negligence) will attach the Company or its servants or agents arising out of or in connection with or in relation to this brochure or any such advice. Any goods supplied by the Company will be supplied solely upon its standard conditions of sale, copies of which are available on request. The Company's policy of continuous product development and improvement renders specifications liable to modification. Information provided in this brochure is therefore subject to change without prior notification.

ACO GRP separators - Oleopator-G /En/05/16/JMa/ Subject to technical changes without notice.