



SlotTop – functional drainage
in minimalist design

COLLECT:
gather and capture



SlotTop – Drainage through slot grates

SlotTop (NW 100 mm)	Single, Double, Triple, Strip	Load class C 250	8
	Single	Load class D 400	12
SlotTop (NW 150 mm)	Single, Double, Triple	Load class C 250	14
	Single	Load class D 400	16
SlotTop (NW 200 mm)	Single, Double, Triple	Load class C 250	18
	Single	Load class D 400	20
	Installation details		22
	Maintenance		24



Declaration of Performance
is available at <https://dop.aco.com>

ACO SlotTop

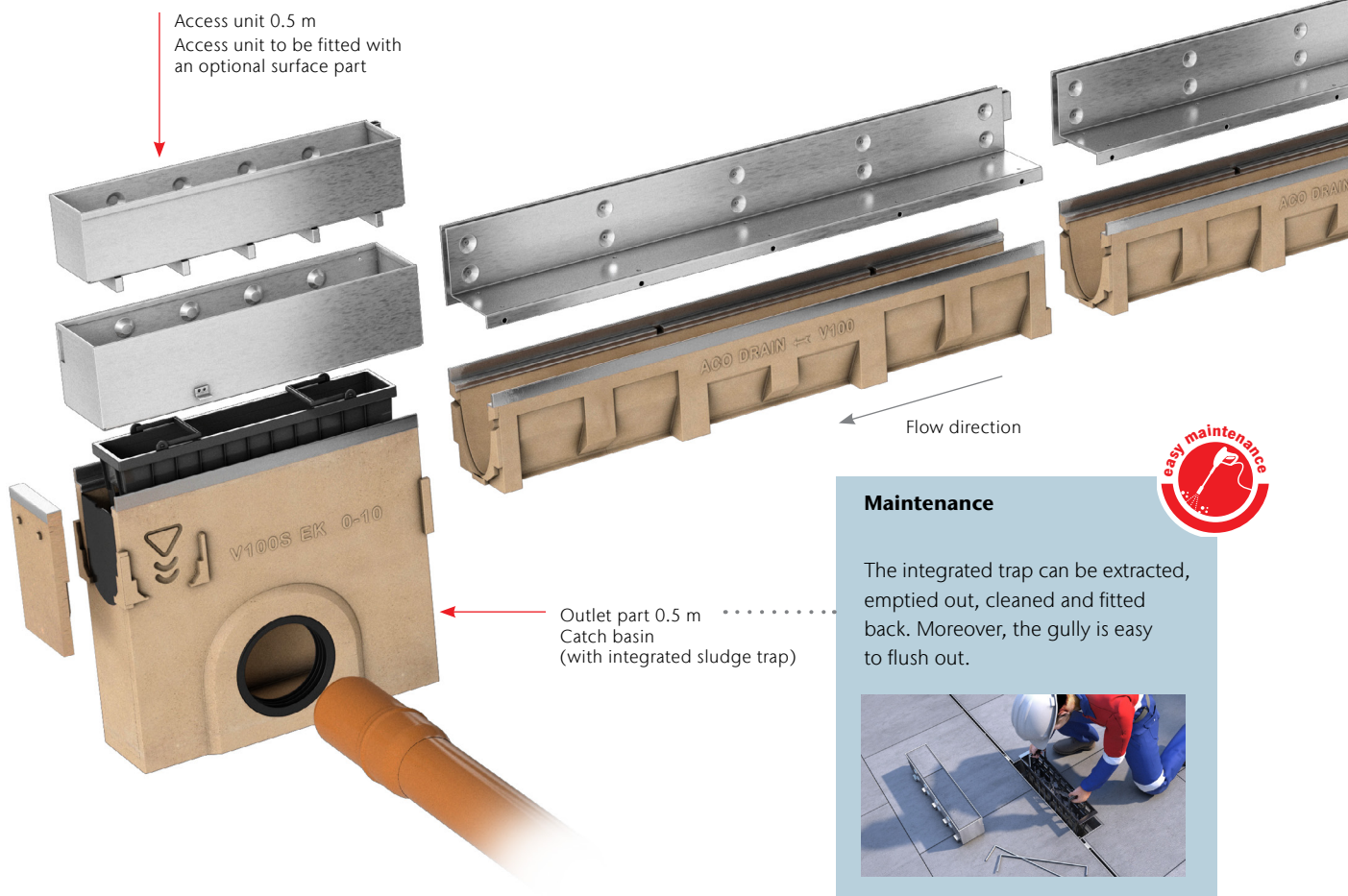


SlotTop – Designed for aesthetic drainage solutions

Uniqueness and charisma are key considerations included in the architectural planning of outdoor surfaces. Drainage is a significant and important part of a unified surface design. Professional line drainage and grates can influence the design to a great extent. Line drainage ensures effective removal of surface water even in sloped installations, ensuring a visually clean design.

SlotTop for the ACO DRAIN® professional line drainage range was created to enable both “concealed” and “enhanced” drainage. Functionality and aesthetics interconnect in a unique way. The brand new line of ACO SlotTop fully meets the requirements of timeless design. If you are an architect, ACO DRAIN® SlotTop can enable a discreet, sleek and original design.

Load classes ¹⁾	
■ C 250	
■ D 400	
as per EN 1433	
Net width (NW)	
100, 150, 200	
Material	
Stainless steel and galvanised steel	
Fields of application	
■ Squares	■ Pedestrian zones
■ Prestige outdoor areas	■ Boarding platform



¹⁾ More information on load classes on page 22 and 23.

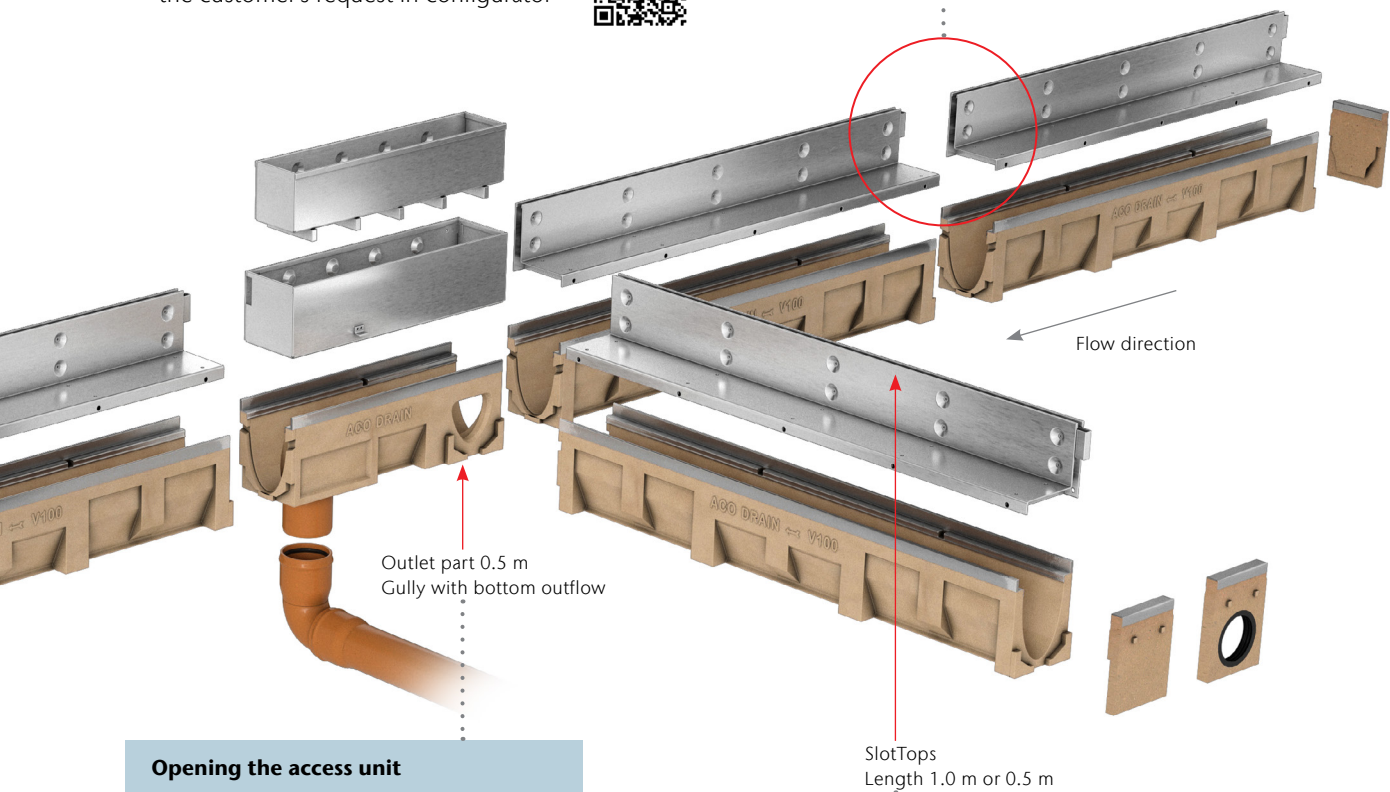
Advantages overview

- A unique product in minimalist design
- Suitable for a whole range of paving blocks made of various materials
- As standard 3 heights of SlotTop are offered: 65, 105 and 150 mm
- SlotTop are suitable for the following ACO DRAIN® drainage systems: Multiline, XtraDrain, MultiDrain and Civiline
- The grates are fitted with a protective cover, which reduces the risk of damage during installation
- System components include, among others, access units for easy maintenance and cleaning
- SlotTop is in full compliance with the EN 1433
- Inlet slot of 10 mm max width gives Heelguard™ protection
- More heights are available upon the customer's request in configurator



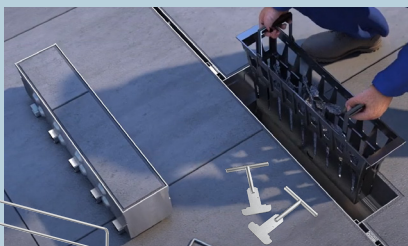
Easy installation

Thanks to the connector, the SlotTops are aligned and connected accurately, ensuring a fluid line and highly aesthetic design.



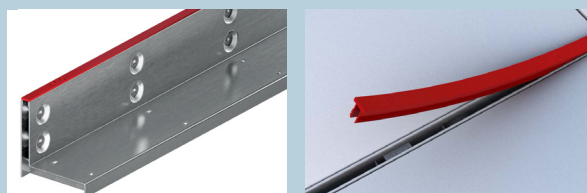
Opening the access unit

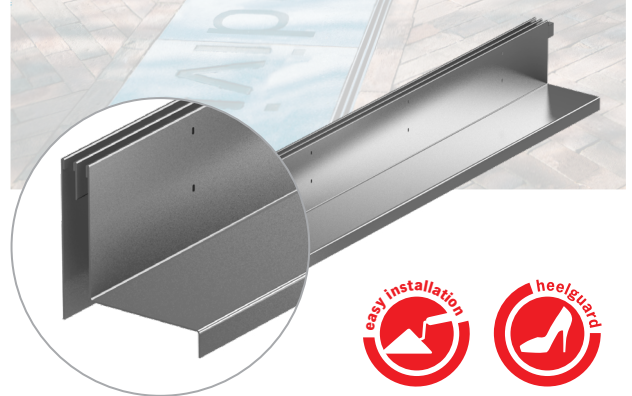
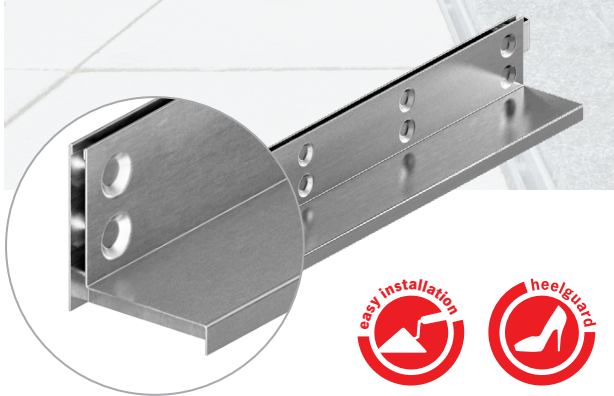
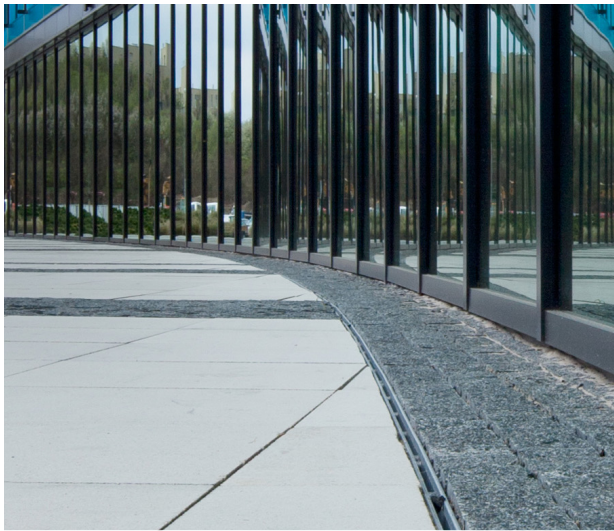
The access unit is easily accessible thanks to an inspection part – to be extracted by special hooks (order No. 445947) or keys (order No. 447850).



Edge protection

The cover protecting the inlet slot not only protects the SlotTop against damage during installation, but also shields the professional line drainage from dirt (order No. 446084).



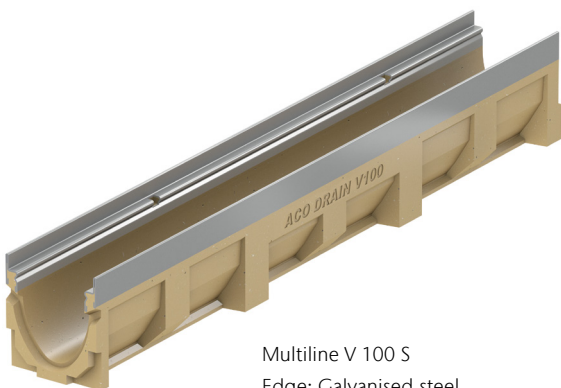


SlotTop SINGLE
Galvanised
Stainless steel

SlotTop DOUBLE
Galvanised
Stainless steel

SlotTop

ACO DRAIN® professional line drainage



Multiline V 100 S
Edge: Galvanised steel

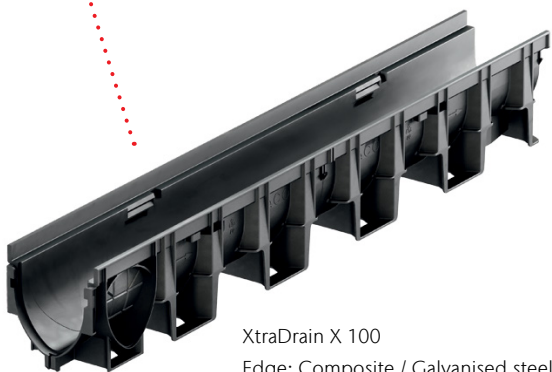
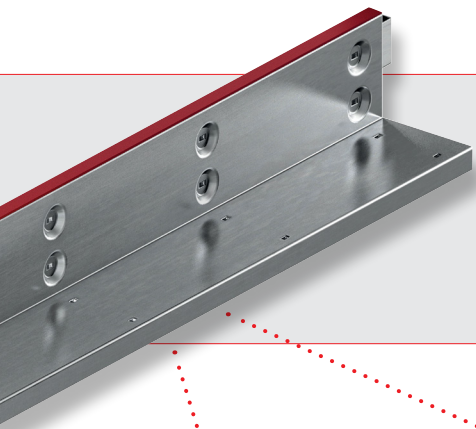


Multiline Seal In V 100
Edge: Galvanised steel / Stainless steel

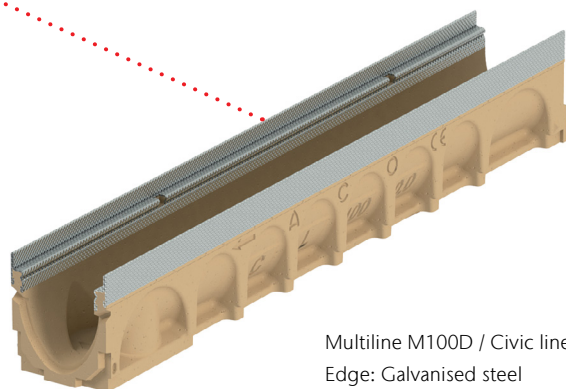


SlotTop TRIPLE
Galvanised
Stainless steel

SlotTop STRIP
Galvanised
Stainless steel



XtraDrain X 100
Edge: Composite / Galvanised steel



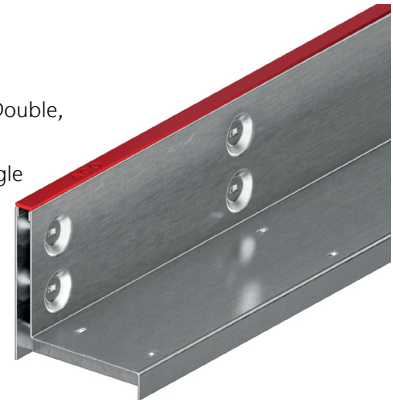
Multiline M100D / Civic line CL100
Edge: Galvanised steel

SlotTop: for NW 100 professional line drainage

ACO Product advantages

- A new generation of SlotTops
- SlotTops are placed into the gully / channel to ensure optimal outlet performance
- The guide connector ensures the parts are connected accurately
- Reinforced upper edge
- Construction heights of 65, 105 and 150 mm for various ways of installation
- **Supplied with cover strips protecting the inlet during installation**

- Drainage system fully certificated as per EN1433:2002
- Net width 100 mm
- Load class C250 - SlotTop Single, Double, Triple, Strip
- Load class D400 - only SlotTop Single
- Suitable for the following systems:
 - Multiline
 - XtraDrain
 - MultiDrain
 - Civicline



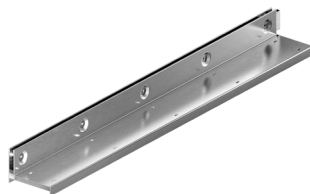
ACO SlotTop, Class C 250

- SlotTops with no welded joints
- 10 mm lateral slot for SlotTop Single and SlotTop Strip
- 2x8 mm lateral slot for SlotTop Double and 3x8 mm lateral slot for SlotTop Triple
- With guide strap
- Slotted frame corresponding fully to EN 1433:2002
- With strengthened top edge
- Slot heights: 65 mm, 105 mm and 150 mm
- **Delivery including cover strips as protection during construction period**



Material	Dimensions			Size of the inlet opening [mm]	Inlet cross-section [cm ² /m]	Weight [kg]	PU [piece]	Item number
	Length	Width	Height					

SlotTop Single



Galvanised steel	1000	123	65	10	100	4,3	72	445926	
	500	123	65	10	100	2,3	100	445927	
	Stainless steel	1000	123	65	10	100	4,2	72	445928
		500	123	65	10	100	2,2	100	445929

SlotTop Single - access unit



Galvanised steel	500	123	65	10	100	3,7	60	445931
	Stainless steel	500	123	65	10	100	3,8	60

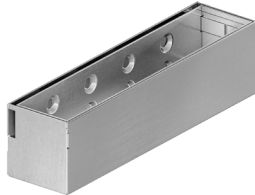
Material	Dimensions			Size of the inlet opening	Inlet cross-section	Weight	PU	Item number
	Length	Width	Slot Height					
	[mm]	[mm]	[mm]	[mm]	[cm ² /m]	[kg]	[piece]	

SlotTop Single



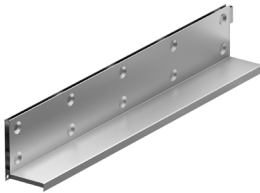
Galvanised steel	1000	123	105	10	100	5,3	72	445598
	500	123	105	10	100	2,8	100	445599
Stainless steel 1.4301	1000	123	105	10	100	5,2	72	445600
	500	123	105	10	100	2,7	100	445601
Stainless steel 1.4404	1000	123	105	10	100	5,2	72	446971
	500	123	105	10	100	2,7	100	446972

SlotTop Single - access unit



Galvanised steel	500	123	105	10	100	4,9	40	445603
Stainless steel 1.4301	500	123	105	10	100	5	40	445602
Stainless steel 1.4404	500	123	105	10	100	5	40	446973

SlotTop Single

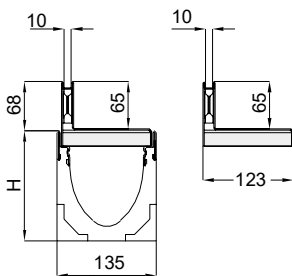


Galvanised steel	1000	123	150	10	100	6,4	48	445932
	500	123	150	10	100	3,3	96	445933
Stainless steel	1000	123	150	10	100	6,3	48	445934
	500	123	150	10	100	3,3	96	445935

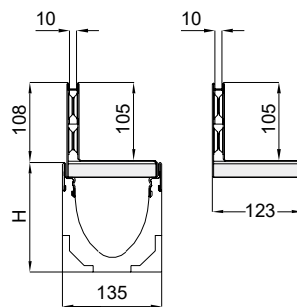
SlotTop Single - access unit



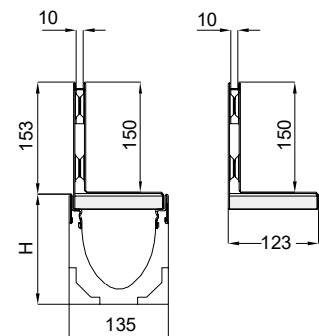
Galvanised steel	500	123	150	10	100	6,2	40	445937
Stainless steel	500	123	150	10	100	6,3	40	445936









SlotTop **Single**
slot height 65 mm

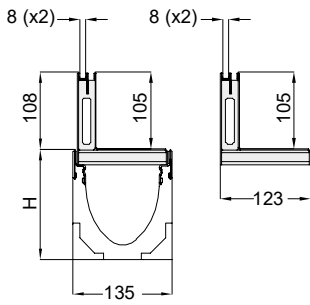


SlotTop **Single**
slot height 105 mm

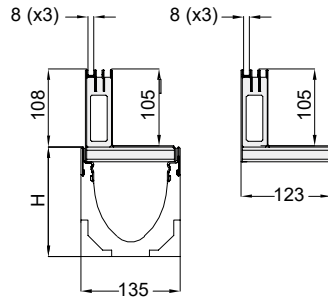


SlotTop **Single**
slot height 150 mm

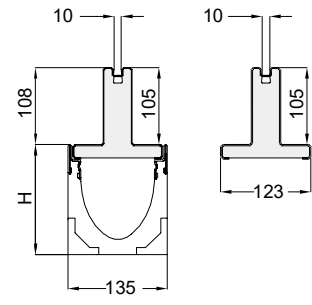
	Material	Dimensions			Size of the inlet opening	Inlet cross-section	Weight	PU	Item number
		Length	Width	Slot Height	[mm]				
SlotTop Double									
	Galvanised steel	1000	123	105	2 x 8	160	5,9	40	447185
		500	123	105	2 x 8	160	3,1	80	447186
	Stainless steel	1000	123	105	2 x 8	160	5,7	40	445938
		500	123	105	2 x 8	160	3	80	445939
SlotTop Double - access unit									
	Galvanised steel	500	123	105	2 x 8	160	5,2	10	447187
	Stainless steel	500	123	105	2 x 8	160	5,3	10	445940
SlotTop Triple									
	Galvanised steel	1000	123	105	3 x 8	240	6,4	40	447768
		500	123	105	3 x 8	240	3,3	10	447769
	Stainless steel	1000	123	105	3 x 8	240	6,2	40	445941
		500	123	105	3 x 8	240	3,2	10	445942
SlotTop Triple - access unit									
	Galvanised steel	500	123	105	3 x 8	240	5,4	10	447770
	Stainless steel	500	123	105	3 x 8	240	5,5	10	445943
SlotTop Strip									
	Stainless steel	1000	123	105	10	100	5,7	48	445944
		500	123	105	10	100	2,9	48	445945
SlotTop Strip - access unit									
	Stainless steel	500	123	105	10	100	6,8	15	445946



SlotTop **Double**
 slot height 105 mm



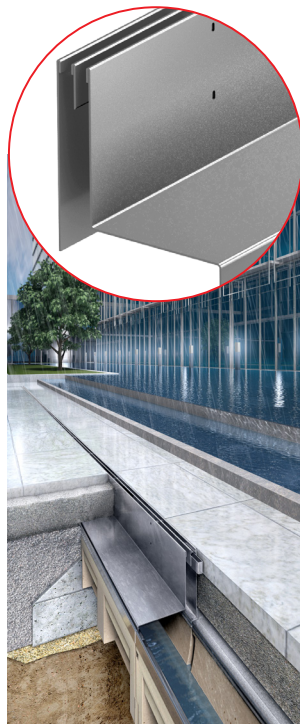
SlotTop **Triple**
 slot height 105 mm



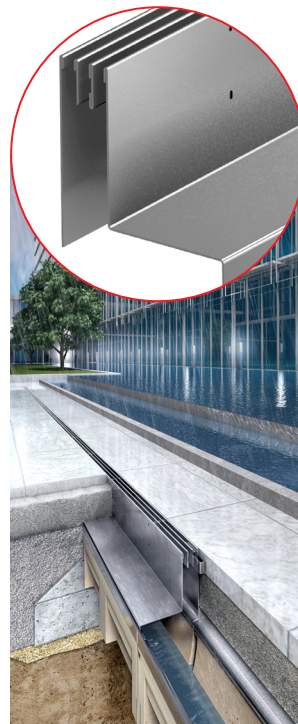
SlotTop **Strip**
 slot height 105 mm



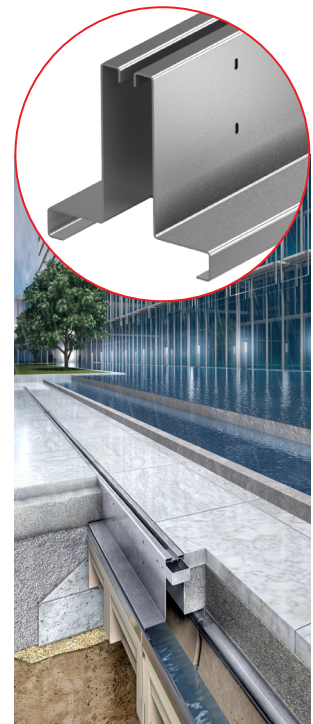
SlotTop **SINGLE**



SlotTop **DOUBLE**



SlotTop **TRIPLE**



SlotTop **STRIP**

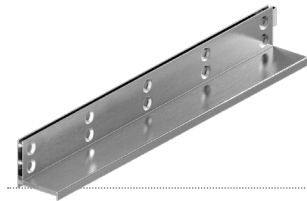
ACO SlotTop, Class D 400

- SlotTop welded solution
- With 10 mm lateral slot
- With guide strap
- Slotted frame corresponding fully to EN 1433:2002
- With strengthened top edge
- Slot height 105 mm and 150 mm
- **Delivery including cover strips as protection during construction period**



Material	Dimensions			Size of the inlet opening [mm]	Inlet cross-section [cm ² /m]	Weight [kg]	PU [piece]	Item number
	Slot Length [mm]	Slot Width [mm]	Slot Height [mm]					

SlotTop Single



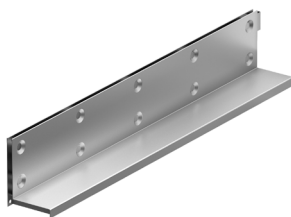
Galvanised steel	1000	123	105	10	100	6,8	60	446015
	500	123	105	10	100	3,5	120	446016
Stainless steel	1000	123	105	10	100	6,7	60	446018
	500	123	105	10	100	3,4	120	446019

SlotTop Single - access unit



Galvanised steel	500	123	105	10	100	6,5	50	446017
Stainless steel	500	123	105	10	100	6,6	50	446020

SlotTop Single



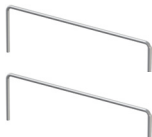




Galvanised steel	1000	123	150	10	100	8,4	48	446021
	500	123	150	10	100	4,3	96	446022
Stainless steel	1000	123	150	10	100	8,1	48	446024
	500	123	150	10	100	4,1	96	446025

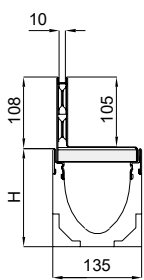
SlotTop Single - access unit



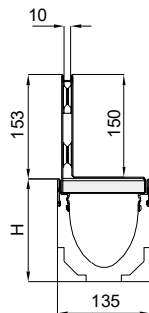
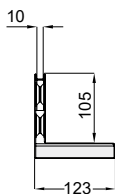
Galvanised steel	500	123	150	10	100	8,1	40	446023
Stainless steel	500	123	150	10	100	8,2	40	446026

Accessories

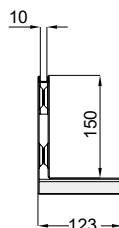
	Description	Suitable for	Weight	Packing	Item number
			[kg]	[piece]	
	Lifting hook for SlotTop access unit <ul style="list-style-type: none"> For lifting SlotTop access unit inner part Galvanised steel 2 pcs per package 	<ul style="list-style-type: none"> SlotTop access unit 	0,5	1	445947
	Lifting key for SlotTop access unit <ul style="list-style-type: none"> For lifting SlotTops Single in LC D 400 and SlotTops Double and Triple in LC C250 Galvanised steel 2 pcs per package 	<ul style="list-style-type: none"> SlotTop access unit 	0,3	1	447850
	Protective covers for SlotTops <ul style="list-style-type: none"> For covering inlets during installation PVC 10 pcs per package, ā 1 m 	<ul style="list-style-type: none"> SlotTop Single 	0,8	1	446084
	Single end cap <ul style="list-style-type: none"> For covering side openings Stainless steel 2 pcs per package 	<ul style="list-style-type: none"> SlotTop Single 65 	0,08	1	446431
		<ul style="list-style-type: none"> SlotTop Single 105 	0,1	1	446432
		<ul style="list-style-type: none"> SlotTop Single 150 	0,2	1	446433
	End cap Double, Triple, Strip <ul style="list-style-type: none"> For covering side openings Stainless steel 2 pcs per package 	<ul style="list-style-type: none"> SlotTop Double 105 	0,1	1	447182
		<ul style="list-style-type: none"> SlotTop Triple 105 	0,1	1	447183
		<ul style="list-style-type: none"> SlotTop Strip 150 	0,1	1	447184



SlotTop **Single**
slot height 105 mm



SlotTop **Single**
slot height 150 mm



SlotTop **SINGLE**

SlotTop: for NW 150 professional line drainage

ACO Product advantages

- A new generation of SlotTops
- SlotTops are placed into the gully / channel to ensure optimal outlet performance
- The guide connector ensures the parts are connected accurately
- Reinforced upper edge
- Construction heights of 105 mm and 150 mm for various ways of installation
- **Supplied with cover strips protecting the inlet during installation**

- Drainage system fully certified as per EN 1433:2002
- Net width 150 mm
- Load class C250 - SlotTop Single, Double, Triple
- Load class D400 - only SlotTop Single
- Suitable for the following systems:
 - Multiline
 - XtraDrain
 - MultiDrain
 - Civicline



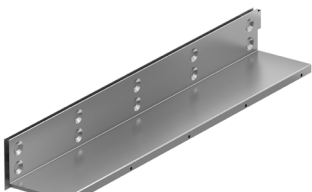
ACO SlotTop, Class C 250

- 10 mm lateral slot for SlotTop Single
- 2x8 mm lateral slot for SlotTop Double and 3x8 mm lateral slot for SlotTop Triple
- With guide strap
- Slotted frame corresponding fully to EN 1433:2002
- With strengthened top edge
- Slot height 105 mm
- **Delivery including cover strips as protection during construction period**

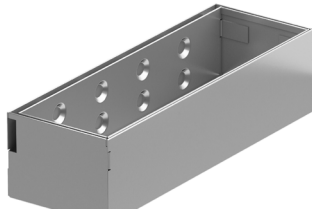


Material	Dimensions			Size of the inlet opening [mm]	Inlet cross-section [cm ² /m]	Weight [kg]	PU [piece]	Item number
	Length	Width	Slot Height					


SlotTop Single

	Galvanised steel	1000	173	105	10	100	6,2	40	446128
		500	173	105	10	100	3,2	80	446129
	Stainless steel	1000	173	105	10	100	6,1	40	446131
		500	173	105	10	100	3,2	80	446132


SlotTop Single - access unit

	Galvanised steel	500	173	105	10	100	5,7	48	446130
	Stainless steel	500	173	105	10	100	5,9	48	446133


SlotTop Double

	Galvanised steel	1000	173	105	2 x 8	160	6,8	40	448215
		500	173	105	2 x 8	160	3,5	80	448216
	Stainless steel	1000	173	105	2 x 8	160	6,6	40	448218
		500	173	105	2 x 8	160	3,4	80	448219


SlotTop Double - access unit

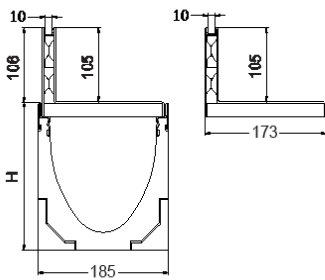
	Galvanised steel	500	173	105	2 x 8	160	6	48	448217
	Stainless steel	500	173	105	2 x 8	160	6,1	48	448220

SlotTop Triple

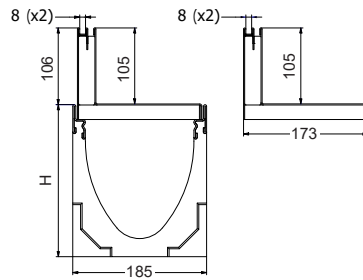
	Galvanised steel	1000	173	105	3 x 8	240	7,3	40	448227
		500	173	105	3 x 8	240	3,8	80	448228
	Stainless steel	1000	173	105	3 x 8	240	7	40	448230
		500	173	105	3 x 8	240	3,7	80	448231

SlotTop Triple - access unit

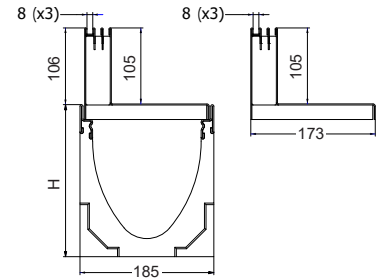
	Galvanised steel	500	173	105	3 x 8	240	6,2	48	447229
	Stainless steel	500	173	105	3 x 8	240	6,3	48	448232



SlotTop **Single**
slot height 105 mm



SlotTop **Double**
slot height 105 mm



SlotTop **Triple**
slot height 105 mm



SlotTop **SINGLE**



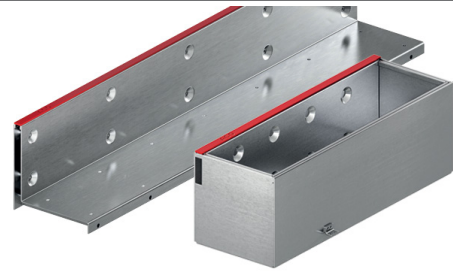
SlotTop **DOUBLE**



SlotTop **TRIPLE**

ACO SlotTop, Class D 400

- SlotTop welded solution
- With 10 mm lateral slot
- With guide strap
- Slotted frame corresponding fully to EN 1433:2002
- With strengthened top edge
- Slot height 105, 150 mm
- **Delivery including cover strips as protection during construction period**



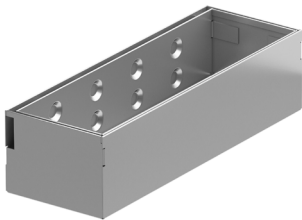
Material	Dimensions			Size of the inlet opening [mm]	Inlet cross-section [cm ² /m]	Weight [kg]	PU [piece]	Item number
	Length [mm]	Width [mm]	Slot Height [mm]					

SlotTop Single



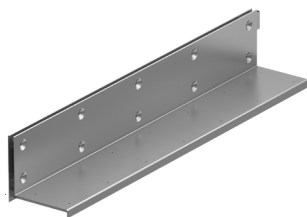
Galvanised steel	1000	173	105	10	100	8,4	40	446027
	500	173	105	10	100	4,5	80	446028
Stainless steel	1000	173	105	10	100	8,1	40	446030
	500	173	105	10	100	4,3	80	446031

SlotTop Single - access unit



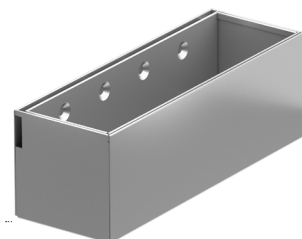
Galvanised steel	500	173	105	10	100	7,7	48	446029
Stainless steel	500	173	105	10	100	7,8	48	446032

SlotTop Single

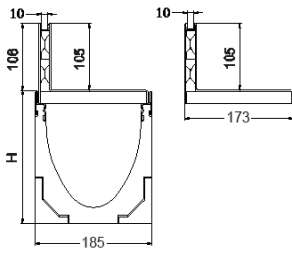


Galvanised steel	1000	173	150	10	100	9,8	32	446033
	500	173	150	10	100	5,2	64	446034
Stainless steel	1000	173	150	10	100	9,5	32	446036
	500	173	150	10	100	5	64	446037

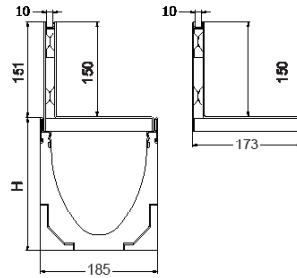
SlotTop Single - access unit



Galvanised steel	500	173	150	10	100	9,5	32	446035
Stainless steel	500	173	150	10	100	9,6	32	446038



SlotTop **Single**
slot height 105 mm

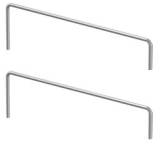






SlotTop **Single**
slot height 150 mm



SlotTop **SINGLE**

Accessories

	Description	Suitable for	Weight	Packing	Item number
			[kg]	[piece]	
	<p>Lifting hook for SlotTop access unit</p> <ul style="list-style-type: none"> For lifting SlotTop access unit inner part Galvanised steel 2 pcs per package 	<ul style="list-style-type: none"> SlotTop access unit 	0,5	1	445947
	<p>Lifting key for SlotTop access unit</p> <ul style="list-style-type: none"> For lifting SlotTops Single in LC D 400 and SlotTops Double and Triple in LC C250 Galvanised steel 2 pcs per package 	<ul style="list-style-type: none"> SlotTop access unit 	0,3	1	447850
	<p>Protective covers for SlotTops</p> <ul style="list-style-type: none"> For covering inlets during installation PVC 10 pcs per package, ā 1 m 	<ul style="list-style-type: none"> SlotTop Single 	0,8	1	446084
	<p>Single end cap</p> <ul style="list-style-type: none"> For covering side openings Stainless steel 2 pcs per package 	<ul style="list-style-type: none"> SlotTop Single 105 	0,1	1	446432
		<ul style="list-style-type: none"> SlotTop Single 150 	0,2	1	446433
	<p>End cap Double, Triple, Strip</p> <ul style="list-style-type: none"> For covering side openings Stainless steel 2 pcs per package 	<ul style="list-style-type: none"> SlotTop Double 105 	0,1	1	447182
		<ul style="list-style-type: none"> SlotTop Triple 105 	0,1	1	447183

SlotTop: for NW 200 professional line drainage

ACO Product advantages

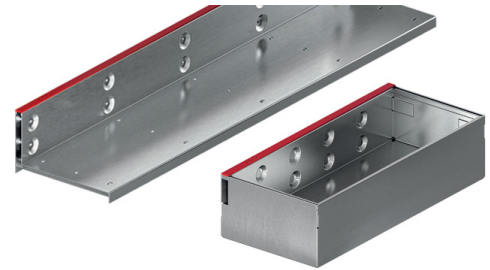
- A new generation of SlotTops
- SlotTops are placed into the gully / channel to ensure optimal outlet performance
- The guide connector ensures the parts are connected accurately
- Reinforced upper edge
- Construction heights of 105 and 150 mm for various ways of installation
- **Supplied with cover strips protecting the inlet during installation**

- Drainage system fully certified as per EN 1433:2002
- Net width 200 mm
- Load class C250 - SlotTop Single, Double, Triple
- Load class D400 - only SlotTop Single
- Suitable for the following systems:
 - Multiline
 - XtraDrain
 - MultiDrain
 - Civicline



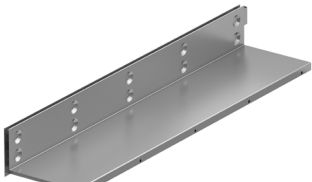
ACO SlotTop, Class C 250

- 10 mm lateral slot for SlotTop Single
- 2x8 mm lateral slot for SlotTop Double and 3x8 mm lateral slot for SlotTop Triple
- With guide strap
- Slotted frame corresponding fully to EN 1433:2002
- With strengthened top edge
- Slot height 105 mm
- **Delivery including cover strips as protection during construction period**




Material	Dimensions			Size of the inlet opening [mm]	Inlet cross-section [cm ² /m]	Weight [kg]	PU [piece]	Item number
	Slot Length [mm]	Width [mm]	Height [mm]					


SlotTop Single

	Galvanised steel	1000	223	105	10	100	7,5	36	446134
		500	223	105	10	100	3,9	72	446135
	Stainless steel	1000	223	105	10	100	7,4	36	446137
		500	223	105	10	100	3,9	72	446138


SlotTop Single - access unit

	Galvanised steel	500	223	105	10	100	6,5	36	446136
	Stainless steel	500	223	105	10	100	6,7	36	446139


SlotTop Double

	Galvanised steel	1000	223	105	2 x 8	160	8,3	36	448221
		500	223	105	2 x 8	160	4,3	72	448222
	Stainless steel	1000	223	105	2 x 8	160	8	36	448224
		500	223	105	2 x 8	160	4,2	72	448225


SlotTop Double - access unit

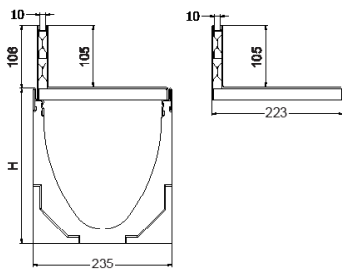
	Galvanised steel	500	223	105	2 x 8	160	6,8	36	448223
	Stainless steel	500	223	105	2 x 8	160	6,9	36	448226

SlotTop Triple

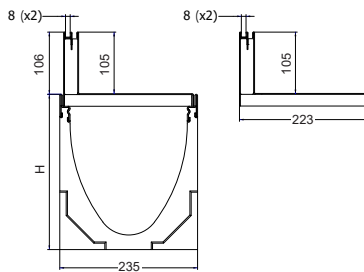
	Galvanised steel	1000	223	105	3 x 8	240	8,8	36	448233
		500	223	105	3 x 8	240	4,6	72	448234
	Stainless steel	1000	223	105	3 x 8	240	8,5	36	448236
		500	223	105	3 x 8	240	4,4	72	448237

SlotTop Triple - access unit

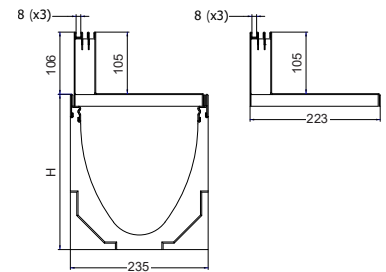
	Galvanised steel	500	223	105	3 x 8	240	7	36	448235
	Stainless steel	500	223	105	3 x 8	240	7,1	36	448238



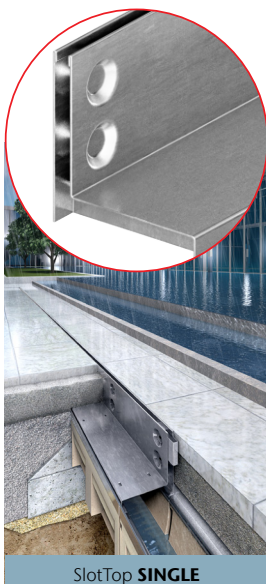
SlotTop **Single**
slot height 105 mm



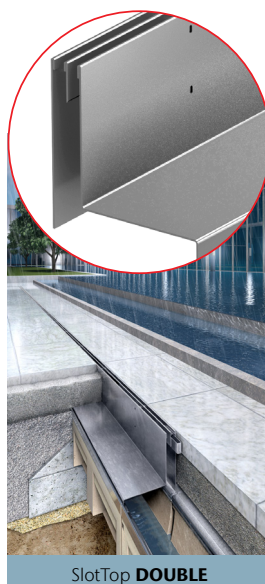
SlotTop **Double**
slot height 105 mm



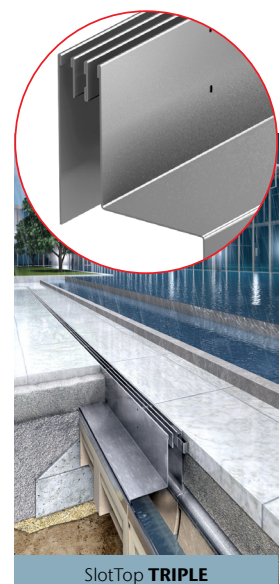
SlotTop **Triple**
slot height 105 mm



SlotTop **SINGLE**



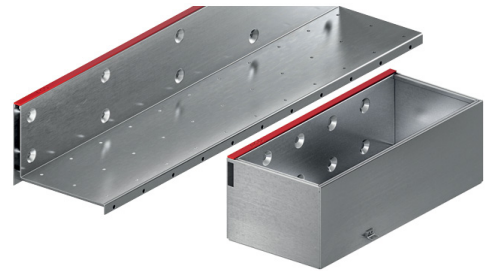
SlotTop **DOUBLE**



SlotTop **TRIPLE**

ACO SlotTop, Class D 400

- With 10 mm lateral slot
- With guide strap
- Slotted frame corresponding to fully to EN 1433:2002
- With strengthened top edge
- Slot height 105, 150 mm
- Delivery including cover strips as protection during construction period



Material	Dimensions			Size of the inlet opening [mm]	Inlet cross-section [cm ² /m]	Weight [kg]	PU [piece]	Item number
	Length [mm]	Width [mm]	Slot Height [mm]					

SlotTop Single



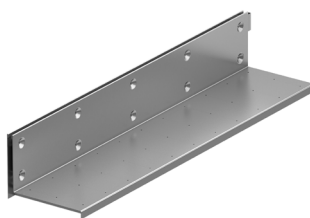
Galvanised steel	1000	223	105	10	100	10,5	36	446039
	500	223	105	10	100	5,6	72	446040
Stainless steel	1000	223	105	10	100	10,1	36	446042
	500	223	105	10	100	5,4	72	446043

SlotTop Single - access unit



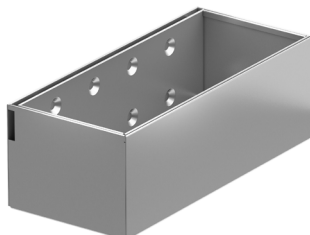
Galvanised steel	500	223	105	10	100	8,9	36	446041
Stainless steel	500	223	105	10	100	9,0	36	446044

SlotTop Single

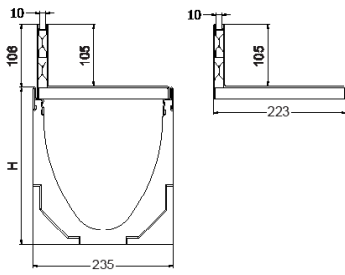


Galvanised steel	1000	223	150	10	100	12,0	24	446045
	500	223	150	10	100	6,4	48	446046
Stainless steel	1000	223	150	10	100	11,5	24	446048
	500	223	150	10	100	6,1	48	446049

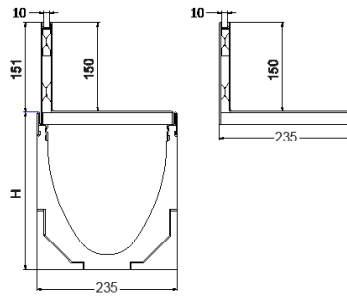
SlotTop Single - access unit



Galvanised steel	500	223	150	10	100	10,9	24	446047
Stainless steel	500	223	150	10	100	11,0	24	446050



SlotTop **Single**
slot height 105 mm








SlotTop **Single**
slot height 150 mm



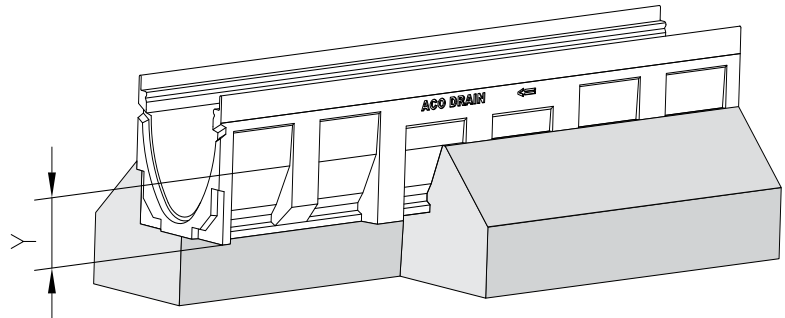
SlotTop **SINGLE**

Accessories

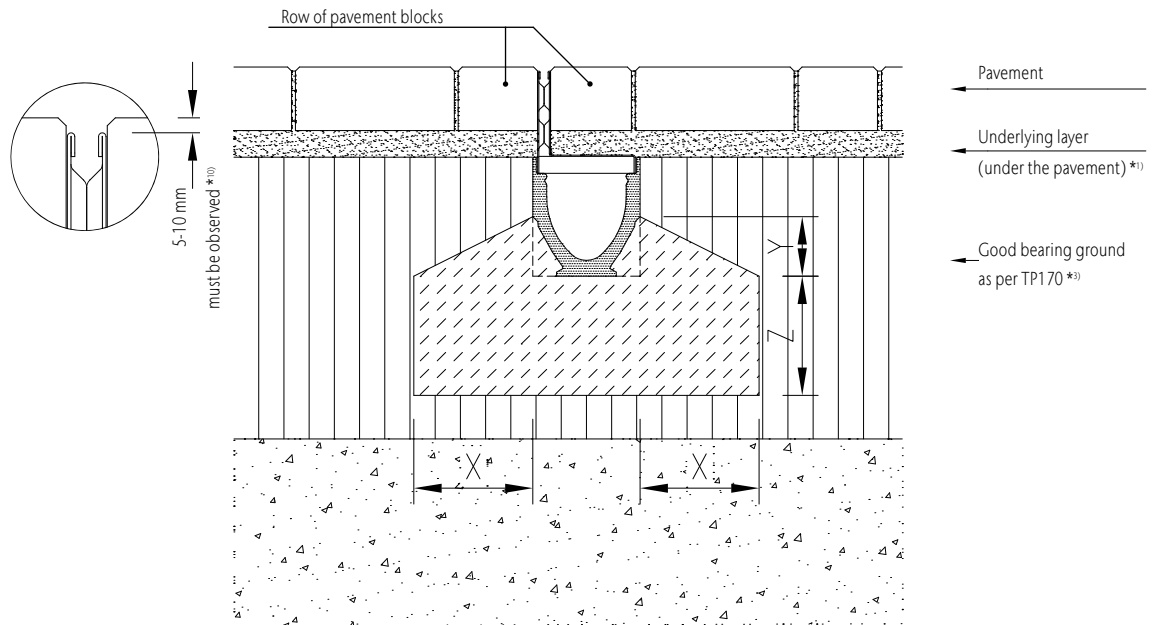
	Description	Suitable for	Weight [kg]	Packing [piece]	Item number
	Lifting hook for SlotTop access unit <ul style="list-style-type: none"> For lifting SlotTop access unit inner part Galvanised steel 2 pcs per package 	<ul style="list-style-type: none"> SlotTop access unit 	0,5	1	445947
	Lifting key for SlotTop access unit <ul style="list-style-type: none"> For lifting SlotTops Single in LC D 400 and SlotTops Double and Triple in LC C250 Galvanised steel 2 pcs per package 	<ul style="list-style-type: none"> SlotTop access unit 	0,3	1	447850
	Protective covers for SlotTops <ul style="list-style-type: none"> For covering inlets during installation PVC 10 pcs per package, \bar{a} 1 m 	<ul style="list-style-type: none"> SlotTop Single 	0,8	1	446084
	Single end cap <ul style="list-style-type: none"> For covering side openings Stainless steel 2 pcs per package 	<ul style="list-style-type: none"> SlotTop Single 105 	0,1	1	446432
		<ul style="list-style-type: none"> SlotTop Single 150 	0,2	1	446433
	End cap Double, Triple <ul style="list-style-type: none"> For covering side openings Stainless steel 2 pcs per package 	<ul style="list-style-type: none"> SlotTop Double 105 	0,1	1	447182
		<ul style="list-style-type: none"> SlotTop Triple 105 	0,1	1	447183

Installation details: Overview

The Y construction measurement is stated in the relevant ACO installation details and determines the minimal amount of concrete needed to stabilize the sides of the drainage channel. The figure might differ depending on the drainage channel height and on the thickness of the top layer.



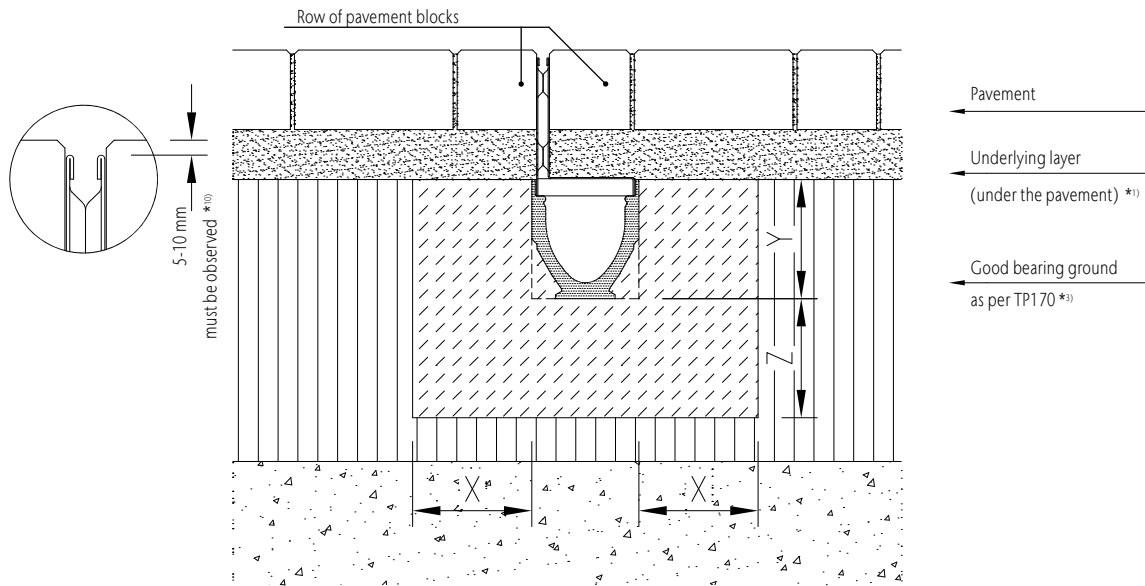
Placing the product in pavement: A 15 to C 250



Load class	(as per EN 1433)	A 15	B 125	C 250	D 400	E 600
Minimal concrete quality	(as per EN 206-1)	≥ C 12/15	≥ C 12/15	≥ C 20/25		
Degree of environment influence	(as per EN 206-1 Z3)	(X0)	(X0)	(X0)		
Basic measurements	X (cm)	≥ 10	≥ 10	≥ 15		
	Y (cm)	≥ 10	≥ 10	≥ 15		
	Z (cm)	≥ 10	≥ 10	≥ 15		

Installation manual at <https://www.swm.aco/>

Placing the product in pavement: D 400

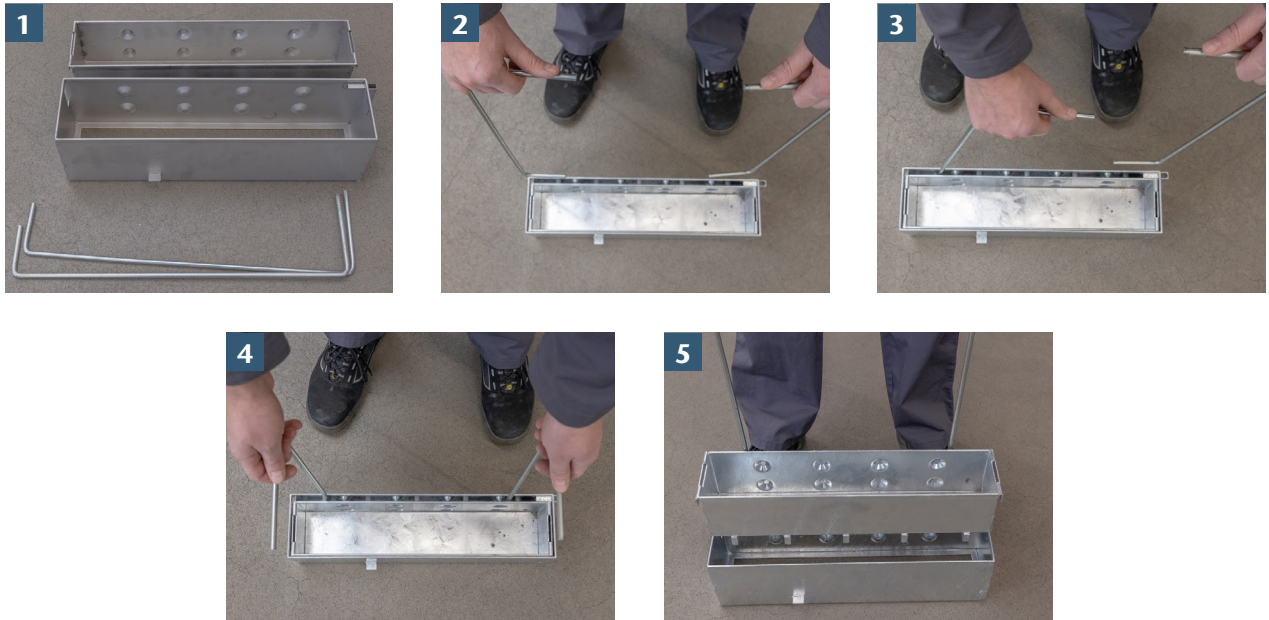


Load class	(as per EN 1433)	A 15	B 125	C 250	D 400	E 600
Minimal concrete quality	(as per EN 206-1)				≥ C 20/25	
Degree of environment influence	(as per EN 206-1 Z3)				(X0)	
Basic measurements	X (cm)				≥ 20	
	Y (cm)				Drainage channel height	
	Z (cm)				≥ 20	

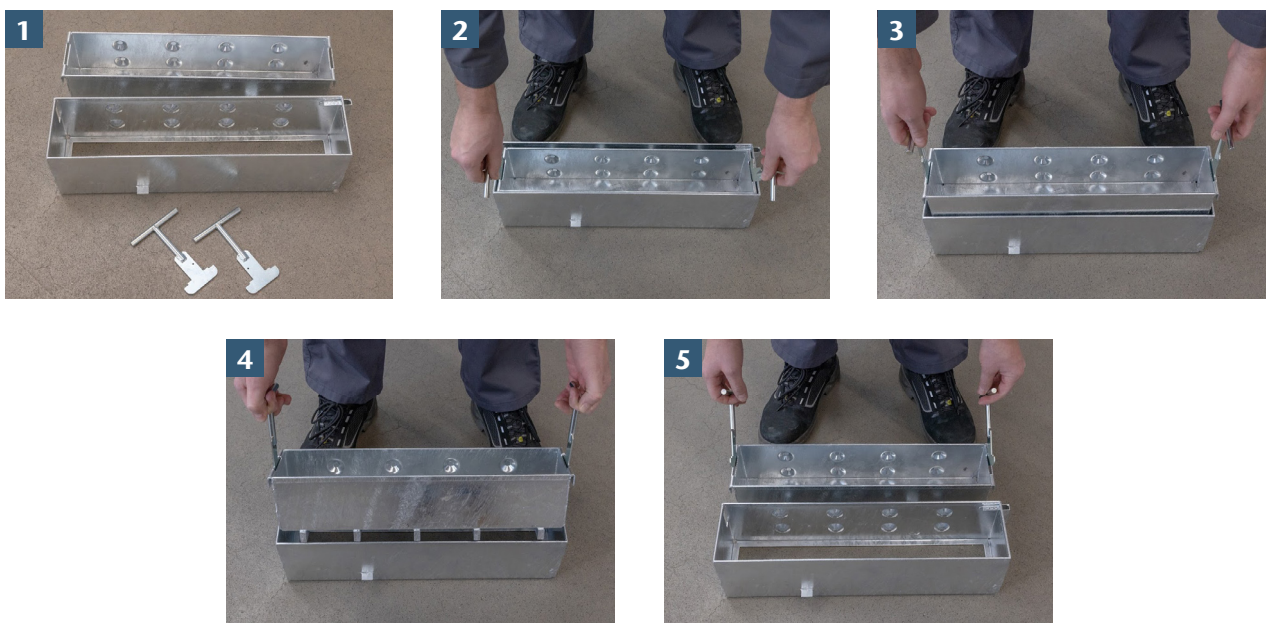
Installation manual at <https://www.swm.aco/>

Maintenance:

SlotTop access unit maintenance using lifting hooks



SlotTop access unit maintenance using lifting keys*



* For SlotTops Single in LC D 400 and SlotTops Double and Triple in LC C250

Every ACO product supports
the ACO system chain



ACO Industries k.s.

Havlíčková 260
582 22 Přebyslav
Czech Republic

ACO. creating
the future of drainage

