

ACO product catalogue

ACO GRP Grease Separators

ACO Lipumax-G



**ACO. The future
of drainage.**



Glass Fibre Grease Separators Lipumax-G



collect:
Collect and
remove



clean:
Pre-clean and
process



hold:
Protect and
attenuate



release:
Pump, discharge and
reuse



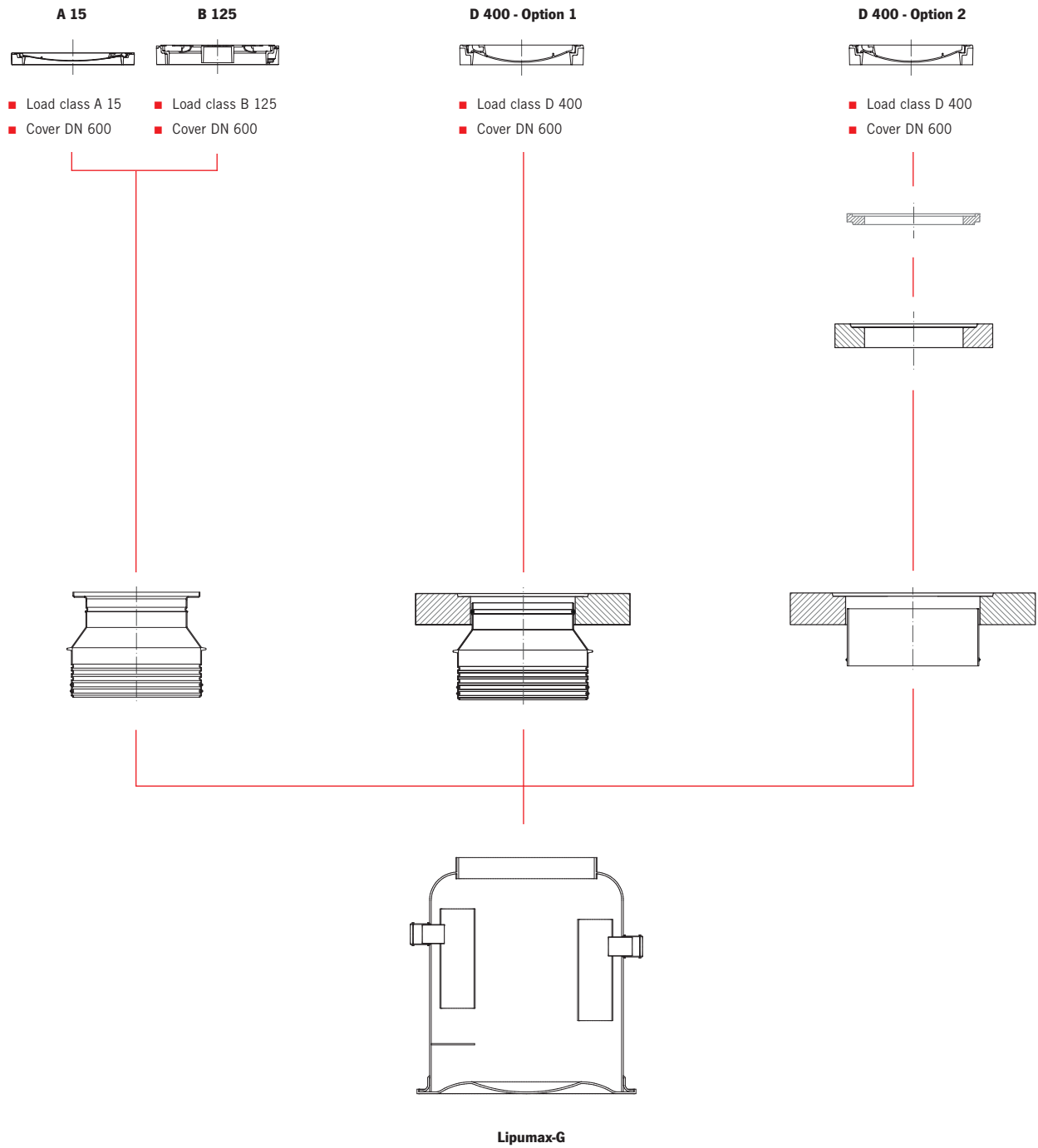
ACO system chain
in action

CONTENT

Assembly concept	4
<hr/>	
Lipumax-G	6
<hr/>	
Top sections for Grease separators	8
<hr/>	
Concrete shaft components	10
<hr/>	

Assembly concept

Assembly parts



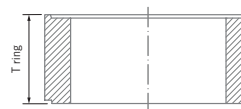
Total height of the access opening of DN 600 shall be max. 600 mm and DN 800 max. 3000 mm (according EN 476). All deeper installation on request.

Adjustable rings DN 600 and DN 800

DN 600 - Top section 5



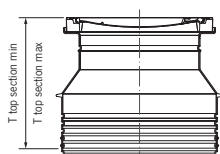
DN 800 - Top section 5



Top sections

A 15

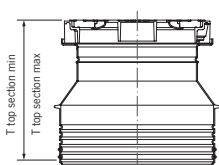
Top section 1



- Load class A 15
- Cover DN 600

B 125

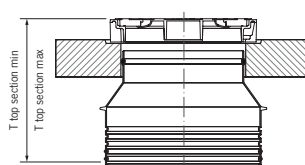
Top section 2



- Load class B 125
- Cover DN 600

D 400 - Option 1

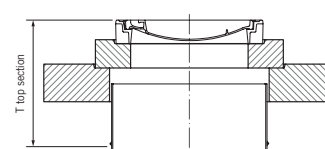
Top section 3



- Load class D 400
- Cover DN 600

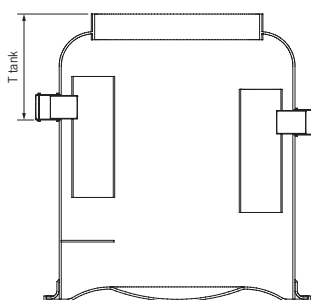
D 400 - Option 2

Top section 5



- Load class D 400
- Cover DN 600

Bottom part



Lipumax-G

Calculation of Installation depth

Top section 1, 2 and 3

- $T_{total} = T_{tank} + T_{top\ section\ (min - max)}$

Top section 5

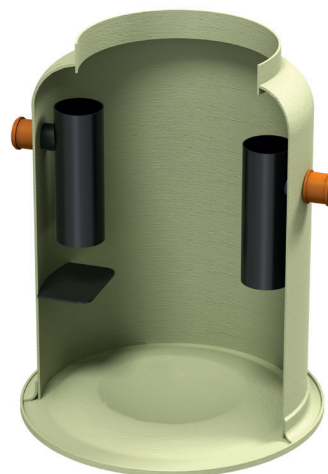
- $T_{total} = T_{tank} + T_{top\ section} + T_{rings}$
- $T_{rings} \leq 3\ 000\ mm$
- $T_{rings\ DN\ 600} \leq 400\ mm$

Lipumax-G-FST NS 1 - 25

Product information

- ACO Product benefits**
- Attractive purchase price and running costs
 - Simple to install, requires less space
 - Top section with odour proof sealed cover
 - Integrated connection for sampling device
 - Including rubber seal ring for connection with cover plate

- Tank made of reinforced plastic
- With integrated sludge trap
- One-piece construction
- With integrated connection for sampling
- Forsheda
- Inner parts made of PEHD

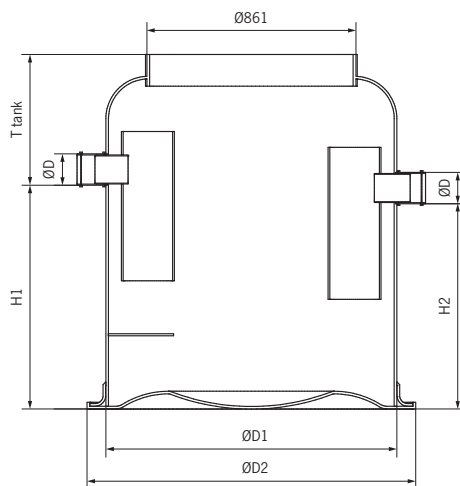


Order information

Nominal size	Inlet/outlet DN/OD [mm]	Contents			Weight [kg]	Item number
		Sludge trap [l]	Oil tank [l]	Overall [l]		
1	100	100	180	510	88	12501.01
1-2	100	200	180	710	93	12502.01
2	100	400	210	914	105	12509.01
4	150	400	210	897	100	12503.01
4	150	800	320	1459	127	12510.01
7	150	700	290	1459	160	12504.01
7	150	1400	750	2619	196	12511.01
10	150	1000	400	2209	205	12505.01
10	200	2000	1140	4909	604	12512.01
15	200	1500	1120	4408	591	12515.01
15	200	3000	1120	5915	631	12513.01
20	200	2000	1140	4759	600	12517.01
20	200	4000	1140	6759	654	12516.01
25	250	2500	1160	4999	620	12518.01
25	250	5000	1140	7622	680	12514.01



Dimensions



Nominal size	Item number	Dimension				
		H1 [mm]	H2 [mm]	ØD1 [mm]	ØD2 [mm]	T tank [mm]
1	12501.01	740	670	1000	1240	440
1-2	12502.01	870	800	1000	1240	440
2	12509.01	1120	1050	1000	1240	440
4	12503.01	1120	1050	1000	1240	490
4	12510.01	1330	1260	1200	1360	560
7	12504.01	1380	1310	1200	1360	560
7	12511.01	1600	1530	1500	1720	640
10	12505.01	1370	1310	1500	1720	630
10	12512.01	1420	1350	1500	1720	640
15	12515.01	1430	1360	1800	2020	790
15	12513.01	2010	1940	1800	2020	790
20	12517.01	1620	1550	1800	2020	790
20	12516.01	2540	2470	2200	2020	800
25	12518.01	1560	1490	2200	2440	790
25	12514.01	2220	2150	2200	2440	790

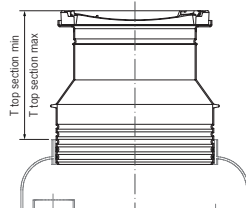
Top sections for Grease separators

Top section 1 - load class A 15

Order information

ACO Product benefits

- Load class A 15 according to EN 124
- Frame from concrete, cover from cast iron
- Clear opening Ø 600 mm
- Cover odour proof sealed
- Raising tube from polyethylene



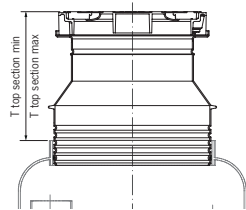
T top section (min-max)* [mm]	Manhole cover [mm]	Weight [kg]	Item number
620-738	Ø 600	94	3301.34.01
738-1188	Ø 600	103	3301.34.02
188-1788	Ø 600	113	3301.34.03

Top section 2 - load class B 125

Order information

ACO Product benefits

- Load class B 125 according to EN 124
- BEGU cover
- Clear opening Ø 600 mm
- Cover odour proof sealed
- Raising tube from polyethylene



T top section (min-max)* [mm]	Manhole cover [mm]	Weight [kg]	Item number
653-773	Ø 600	80	3301.35.01
773-1223	Ø 600	88	3301.35.02
1223-1823	Ø 600	99	3301.35.03

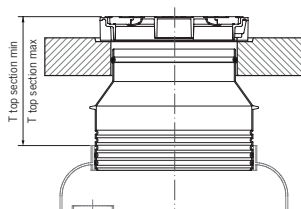
Note*: T tank + T top section (min-max) = T total

Top section 3 - load class D 400 (Option 1)

Order information

ACO Product benefits

- Load class B 125 according to EN 124
- BEGU cover
- Clear opening Ø 600 mm
- Cover odour proof sealed
- Raising tube from polyethylene



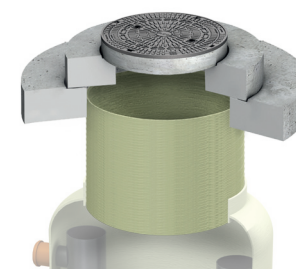
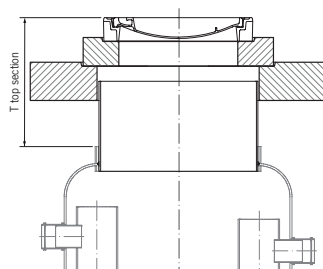
T top section (min-max)* [mm]	Manhole cover [mm]	Weight [kg]	Item number
600-1720 (without load distribution plate)	Ø 600	104	3301.37.00
600-1720 (with load distribution plate)	Ø 600	824	3301.36.00

Top section 5 - load class D 400 (Option 2)

Order information

ACO Product benefits

- Load class D 400 according to EN 124
- BEGU cover
- Clear opening Ø 600 mm
- Selectively with load distribution plate from concrete
- Cover odour proof sealed
- Ø 1500 mm x 200 mm

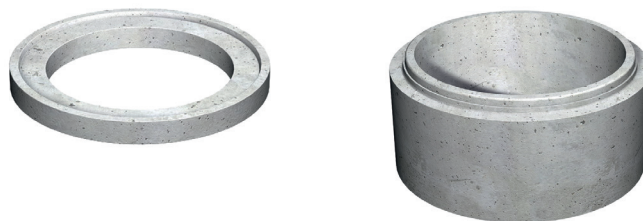


T top section [mm] (min)**	Manhole cover [mm]	Weight [kg]	Item number
735	Ø 600	434	418909

Concrete shaft components

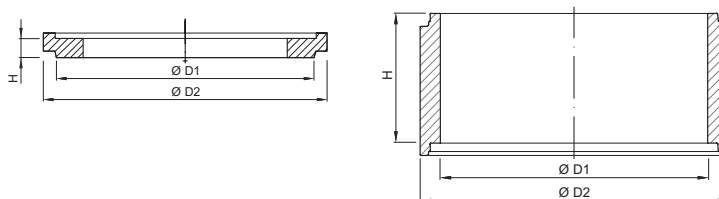
Product information

- To increase and equalise shaft height



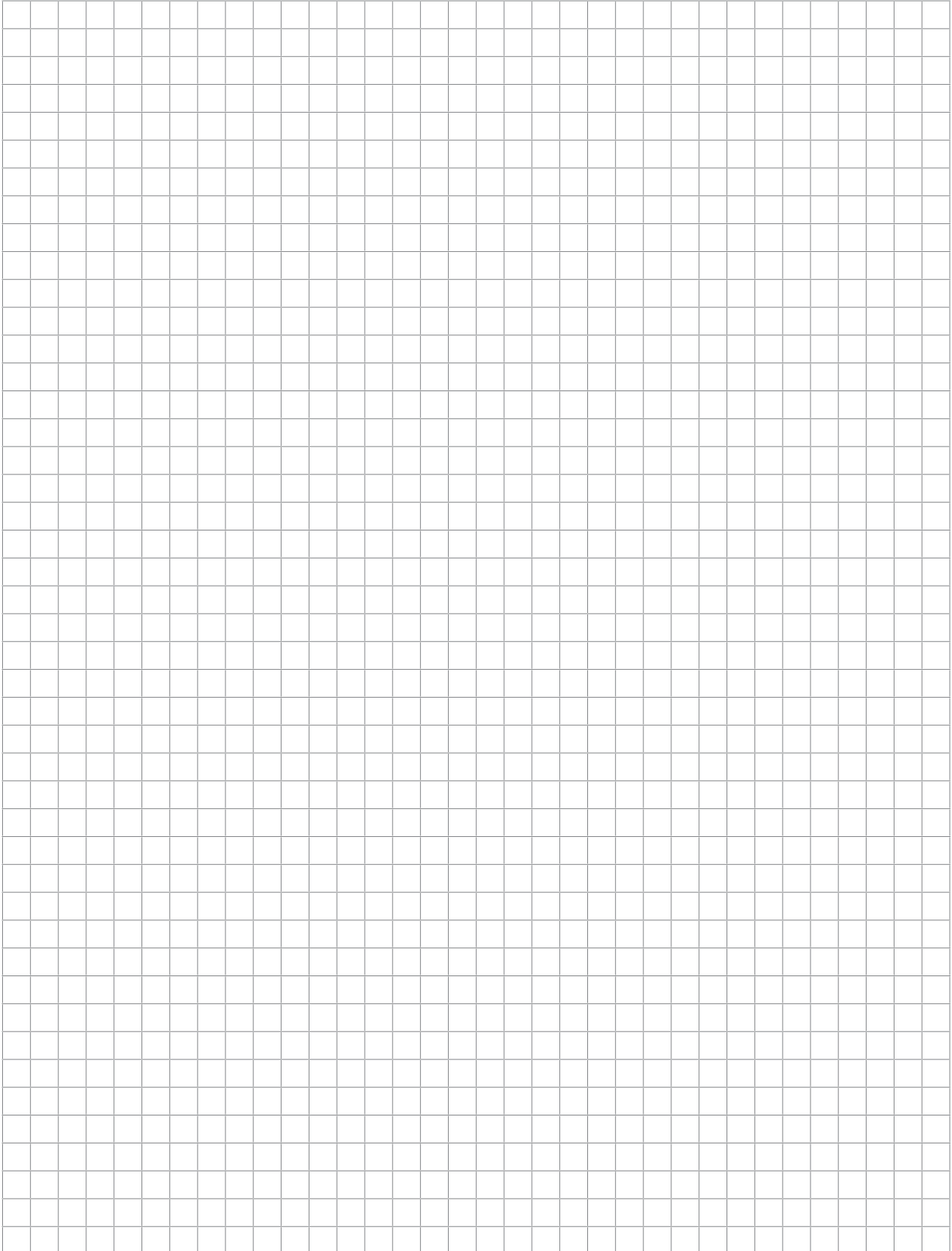
Adjustable rings as defined by DIN 4034 Part 1.

Order information



Type	Dimension			Total height including mortar joints [mm]	Weight [kg]	Item number
	H [mm]	D ₁ [mm]	D ₂ [mm]			
625 x 60	60	625	865	70	39	742011
625 x 80	80	625	865	90	51	742012
625 x 100	100	625	865	110	64	742013
625 x 120	120	625	865	130	80	742014
625 x 150	150	625	865	160	96	742070
800 x100	100	800	1040	110	98	742006
800 x 150	150	800	1040	160	147	742007
800 x 200	200	800	1040	210	196	742008
800 x 400	400	800	1040	410	392	742009
800 x 500	500	800	1040	510	490	742074

Notes

A large rectangular area filled with a fine grid of lines, typical of graph paper, intended for writing notes.

ACO Industries Tábor s.r.o.

Prumyslova 1158
391 01 Sezimovo Usti
Czech Republic

www.aco.com

ACO. The future of drainage.

All reasonable care has been taken in compiling the information in this document. All recommendations and suggestions on the use of ACO products are made without guarantee since the conditions of use are beyond the control of the Company. It is the customer's responsibility to ensure that each product is fit for its intended purpose and that the actual conditions of use are suitable. This brochure and any advice is provided free of charge and accordingly on terms that no liability (including liability for negligence) will attach the Company or its servants or agents arising out of or in connection with or in relation to this brochure or any such advice. Any goods supplied by the Company will be supplied solely upon its standard conditions of sale, copies of which are available on request. The Company's policy of continuous product development and improvement renders specifications liable to modification. Information provided in this brochure is therefore subject to change without prior notification.